

LITE **ALIGN**



450

4-wheel laser alignment system

About us

The LiteAlign system has been designed by our UK engineers to ease the day-to-day operations of a busy workshop without compromising on accuracy or strength. Over twenty years of experience has gone into making LiteAlign one of the industry's leading wheel alignment manufacturers.

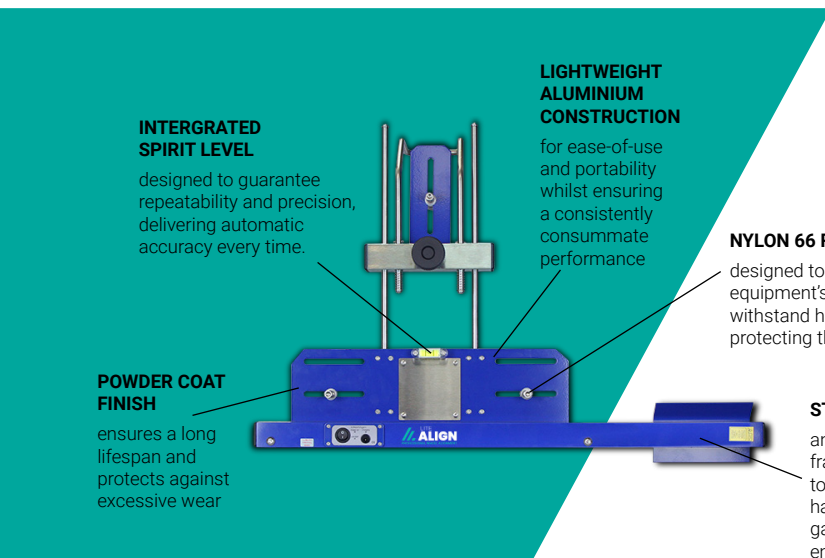
Our heritage means we bring knowledge and authority to our products, whilst our state-of-the-art production facilities and innovative approach to new ideas provide us with the scope to be at the top our game, leading from the front and pioneering new technologies so that we can provide our customers with the ultimate in 4-wheel alignment technology.

Offering competitive pricing, readily available parts, exceptional service and aftersales support, LiteAlign is the go-to manufacturer for garages and workshops across the UK.



450

The 450 is our original 4-wheel laser alignment system, engineered to maximise workshop space due to our industry leading light-weight aluminium construction and on-rack charging design. It includes features and benefits designed to extend the capabilities of the end-user and boost income streams.



INTERGRATED SPIRIT LEVEL

designed to guarantee repeatability and precision, delivering automatic accuracy every time.

LIGHTWEIGHT ALUMINIUM CONSTRUCTION

for ease-of-use and portability whilst ensuring a consistently consummate performance

POWDER COAT FINISH

ensures a long lifespan and protects against excessive wear

NYLON 66 RIM BUTTON

designed to extend the equipment's life span and withstand high usage by protecting the rim

STAINLESS STEEL

anti-corrosive frame is built to tolerate excessive handling within a garage or workshop environment

450 Lite

Four wheel laser aligner with compact wall mount

Includes:

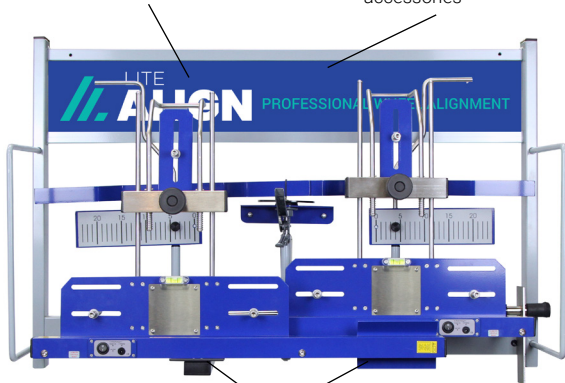
- Two front heads
- Two rear flags
- Compact wall mount

STEEL POWDER COATED RACK

for superior protection in a harsh workshop environment, designed to look smart whilst being robust enough to cope with the daily demands.

WALL MOUNTED RACK

facilitates the convenient and compact storage of the wheel alignment gauges and accessories

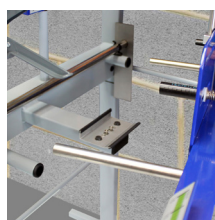


ON RACK CHARGING

is cleverly designed to maximise workshop space whilst simultaneously charging to allow for uninterrupted usage.

450 Wall Rack

Four wheel laser aligner with wall mount rack (includes two front heads, two rear flags, wall mount rack with built in charging, Steering clamp, brake pedal depressor and a set turn discs)



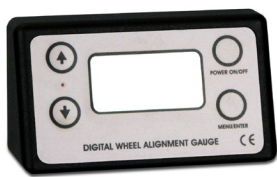
Built in charging

Accessories

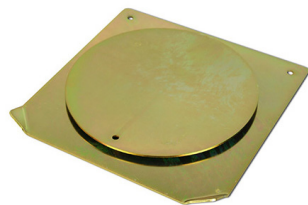


Rack legs

Set of legs to fit our wall rack



**Magnetic
Camber
Caster digital
alignment
gauge**



**Digital
Turn Disc**



**Steering
Lock**



**Brake Pedal
Depressor**



Unit 7 Sadler Park
Earlsfield Close
Lincoln
LN6 3RT

sales@litealign.co.uk
+44(0)1522 688 966

